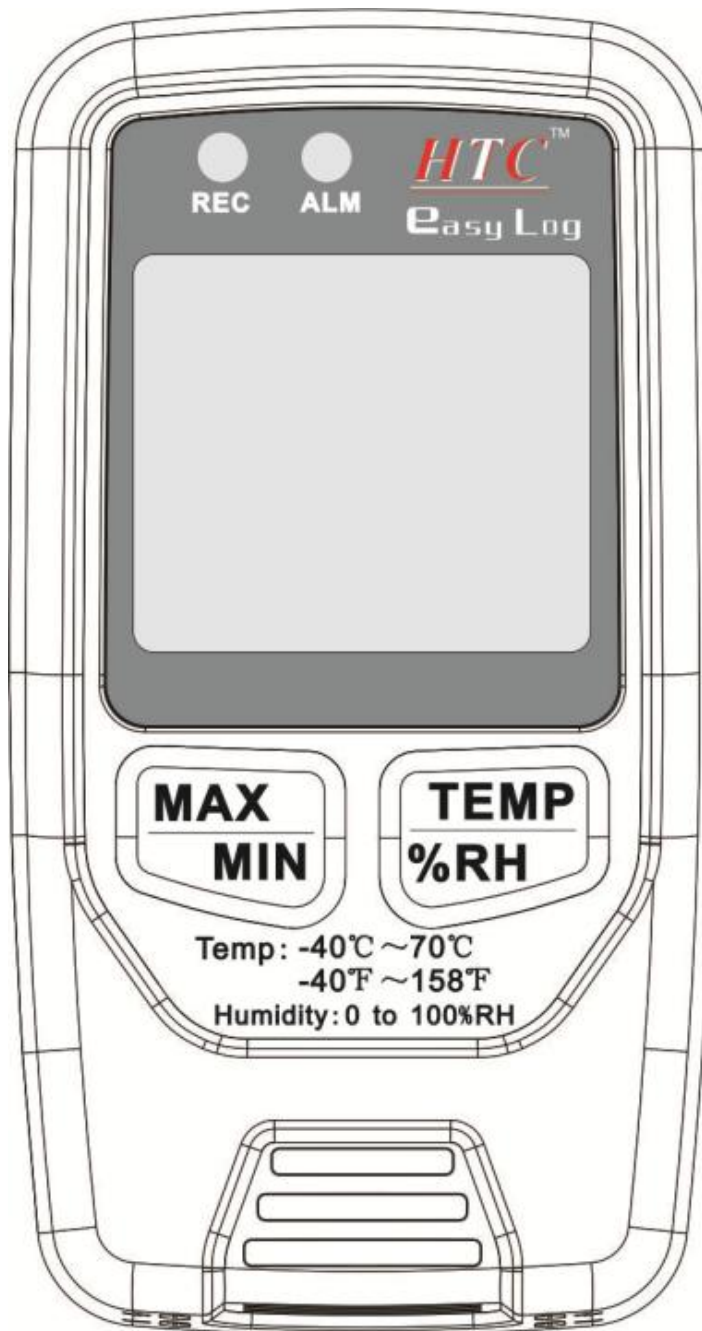


# User's Manual

## Temperature and Humidity Datalogger





# Contents

<b>1. Introduction .....</b>	<b>1</b>
<b>2. Features:.....</b>	<b>1</b>
<b>3. Technical Data.....</b>	<b>2</b>
<b>4. Meter Description .....</b>	<b>3</b>
<b>5. LCD Display Description .....</b>	<b>4</b>
<b>6. Operation Instruction.....</b>	<b>5</b>
<b>7. Notes .....</b>	<b>11</b>
<b>8. Accessories.....</b>	<b>12</b>

## 1. Introduction

The Datalogger is designed with a high accuracy Temperature & Humidity Sensor, providing fast response and stability. It is used for monitoring and collecting data of environment temperature and ambient humidity.

It is widely used in indoor temperature measuring, warehouse management, logistics transportation, telecommunication rooms, intelligent buildings, subways, Department stores, libraries, etc.

## 2. Features:

- Memory for 32700 readings
- LCD to show logging information easily
- Free selectable measurement cycle from 1 sec to 24 hours
- Battery life: more than 2 years (under ideal condition at 22°C)
- Display all status for Alarm and Record through 2 LED'S
- Alarm display if user-defined max/min values are exceeded

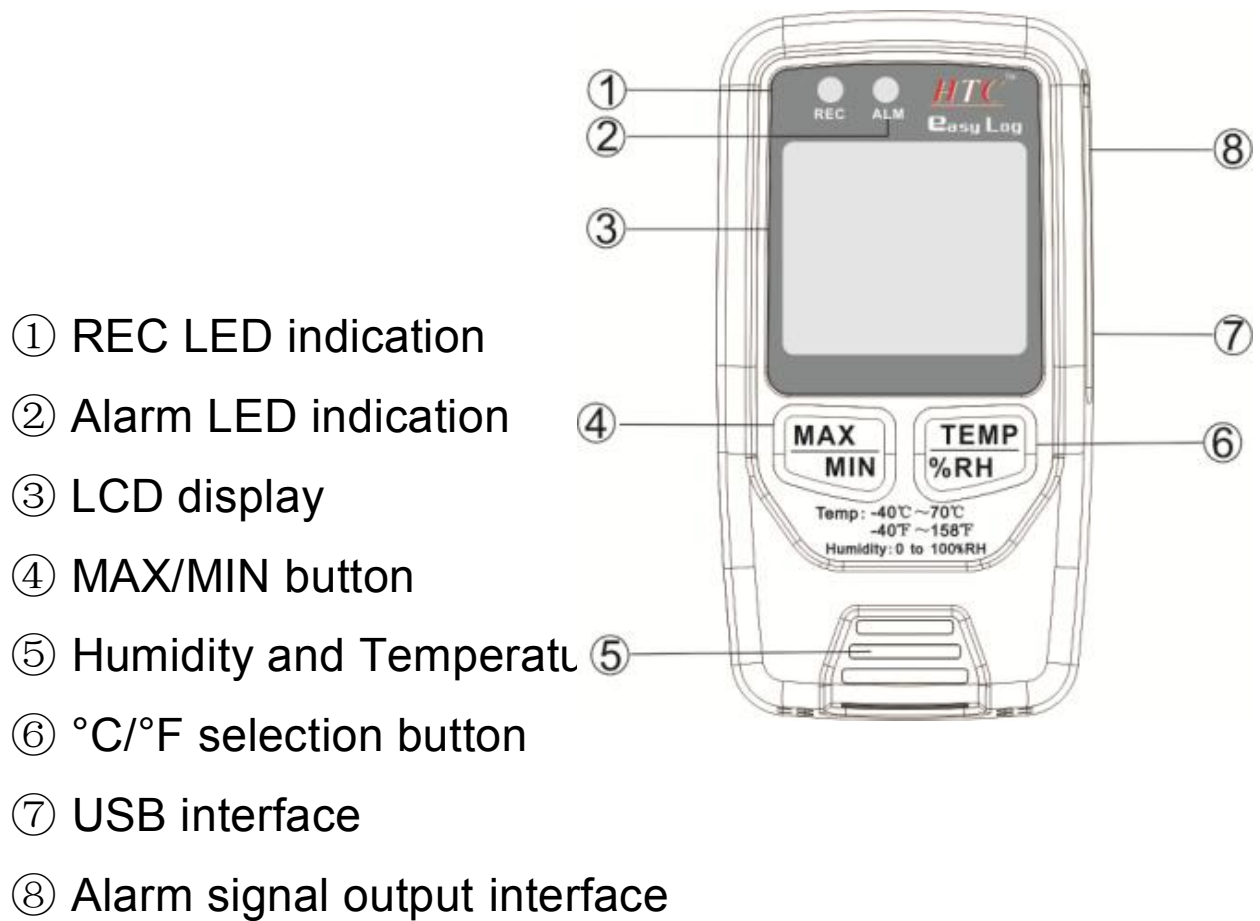


- Analysis software used to view graphically or Text mode for logging data
- USB Computer Interface (Advanced Software Program for all windows)

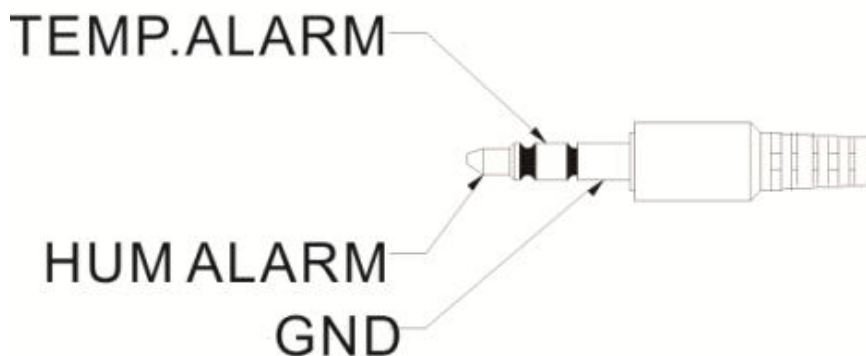
### 3. Technical Data

Temp. range	-40°C~70°C(-40°F~158°F)
Temp. Accuracy	-40°C~40°C/-40°F~104°F :±1.0°C/1.8°F 40°C~70°C/104°F~158°F) :±2.0°C/3.6°F
Humidity range	0 ~ 100%RH
Humidity Accuracy	35 ~ 80%RH: ±3.0%RH 0 ~ 35%RH & 80~100%RH: <±5%RH
Resolution	0.1%RH, 0.1°C
Memory	32000 readings(16000 each for temperature and humidity)
Measuring rate	1 sec. to 24hrs
Analysis software	Windows 98/2000/XP, Win 7 and Win 8
Accessories	3.6 V Lithium battery, software and gift box

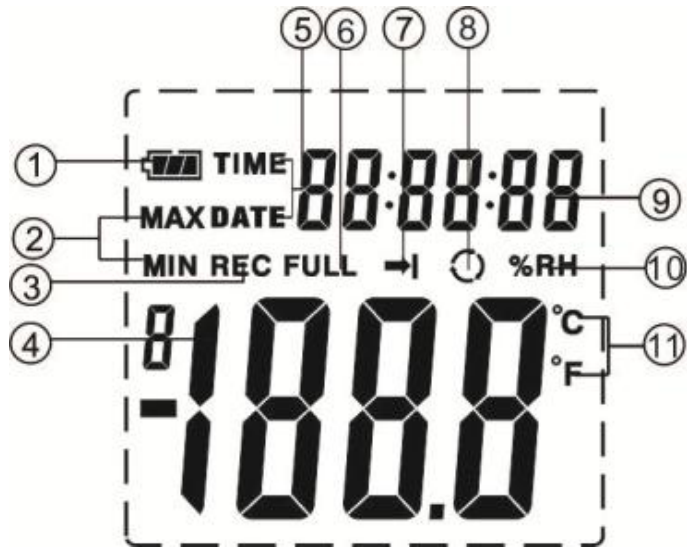
## 4. Meter Description



Note: 1) The alarm LED flashes about one time per second  
2) The alarm will output a High Pulse of 2.5V DC per 10 milliseconds if it exceeds the set High/Low alarm value. Please see the output figure below:



## 5. LCD Display Description



- ① Battery level indication icon
- ② MAX/MIN icon
- ③ REC icon
- ④ Temp./Humidity reading display area
- ⑤ TIME/DATE icon

TIME and DATE icon appears alternately in every 10 seconds

- ⑥ FULL icon

FULL icon appears, which indicates the memory is full, the data logger will stop recording.

- ⑦ → Single record icon

While selecting Single record mode, the data logger

will stop recording while the memory is full.

⑧  Cycle record icon

While selecting Cycle record mode, the data logger will continue logging data to overwrite the earlier data if the memory is full. The data logger will keep recording the latest 32700 readings.

⑨ Time/Date reading display area

⑩ %RH icon

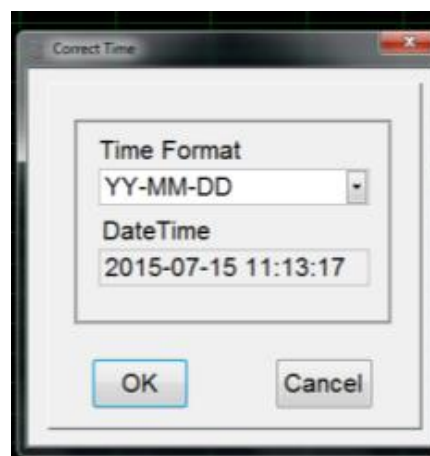
⑪ °C/°F icon

## 6. Operation Instruction

### 6.2.1 Setting Time and Date

Left click “” icon, the setting interface will appear the same

as below:






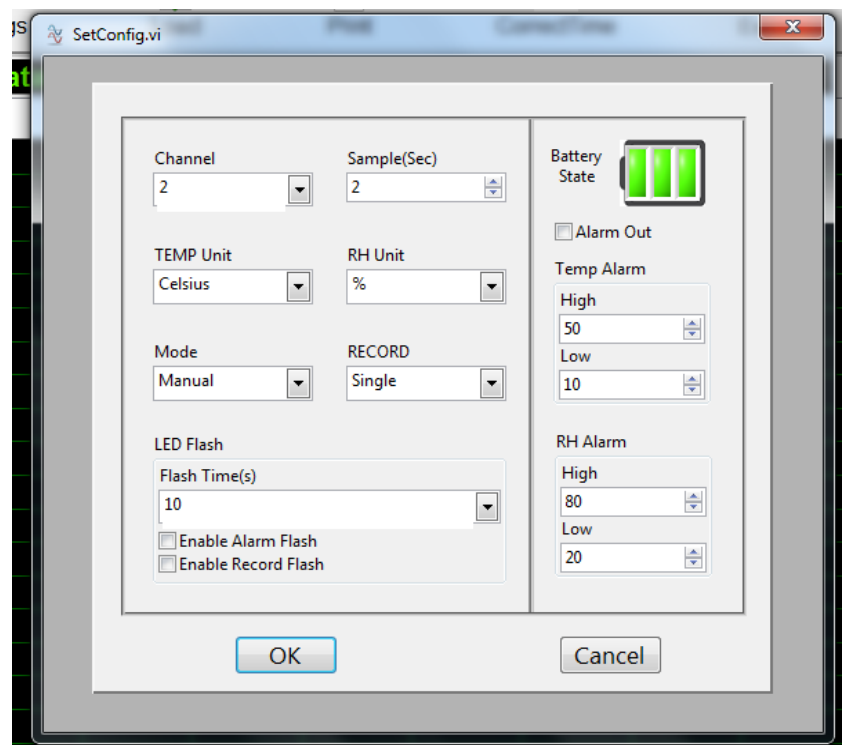
Select the desired date format, date and time, then press “OK” button to confirm and save the settings.

**Note:** All the logged data will be cleared while confirming the new settings. Please pay attention to download and save the data before applying new settings to the meter.

## 6.2.2 Data logger Setup



Left click ”  ” icon, the setting interface will be appear the same as below:



**Channel** – Must stay as 2, because this data logger can only log two things (humidity and temperature)

**Sample(Sec)** – select your logging interval from 1 sec to 86400secs (which is 24hrs)

**TEMP Unit** – select Celsius or Fahrenheit

**RH Unit** – will stay as %

**Mode** – select **Instant** for the meter to start logging as soon as you press OK on the configuration window on the software. Select **Manual** to start the logging by pressing the **TEMP/%RH** button when you are ready to start logging.

**RECORD** – Select **Single** so the meter stops recording when the memory is full. Select **Cycle** for the meter to overwrite the previous data (previous data will be lost in this mode if not downloaded before the memory is full)

**LED Flash** – select 10, 20 or 30 secs for the flash times if you wish to use the REC and Alarm LEDs.

Put ticks in the boxes next to ‘**Enable Alarm Flash**’ and ‘**Enable Record Flash**’ if you want to use the LED lights on the meter. Leave them unticked if you do not wish to use the LED lights.

**Battery State** – Indicates how full or low the battery is

**Alarm Out** – Put a tick in this box if you want to set alarms and view them on the graph when your results are downloaded

**Temp Alarm** – set a high and low alarm in whole numbers (you cannot use decimal places)

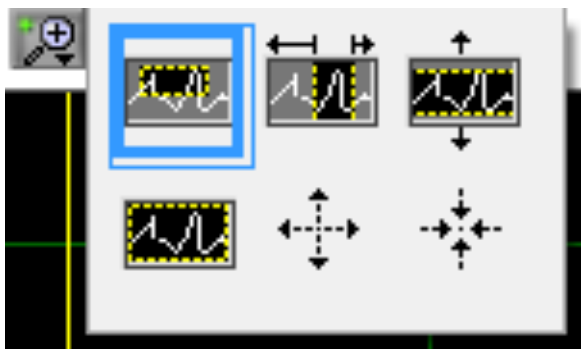
**RH Alarm** – set a high and low alarm in whole numbers (you cannot use decimal places)

After finishing the settings, press “OK” button to confirm and save it.

**Note:** All the logged data will be cleared while confirming the new settings. Please pay attention to download and save the data before applying new settings.

### 6.2.3 Zoom In and Zoom Out

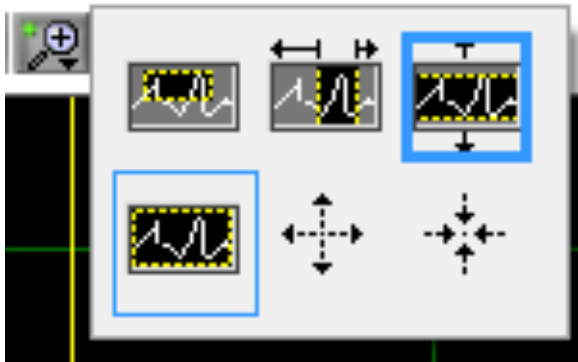
(1). Zoom In: Click the zoom icon just above the graph and select the first icon on the top left (see image below)




This will allow you to zoom in on any part of the graph.

The other icons allow you to zoom left to right or up and down.


(2). Zoom out: Press the bottom left icon (see image on page 10)

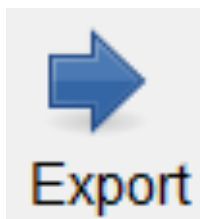


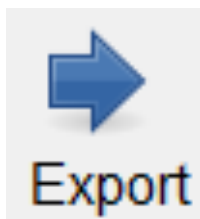
## 6.2.5 Download Data

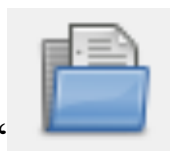
After connecting the meter to your PC press “” button to download the recorded data.

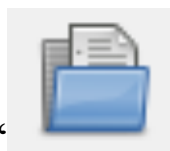
## 6.2.6 File save and open

(1). After downloading the data, click “” button, pick a location, name the file and then click save to finish file save. Or



click  to export the readings to EXCEL and to save the file in an excel format.

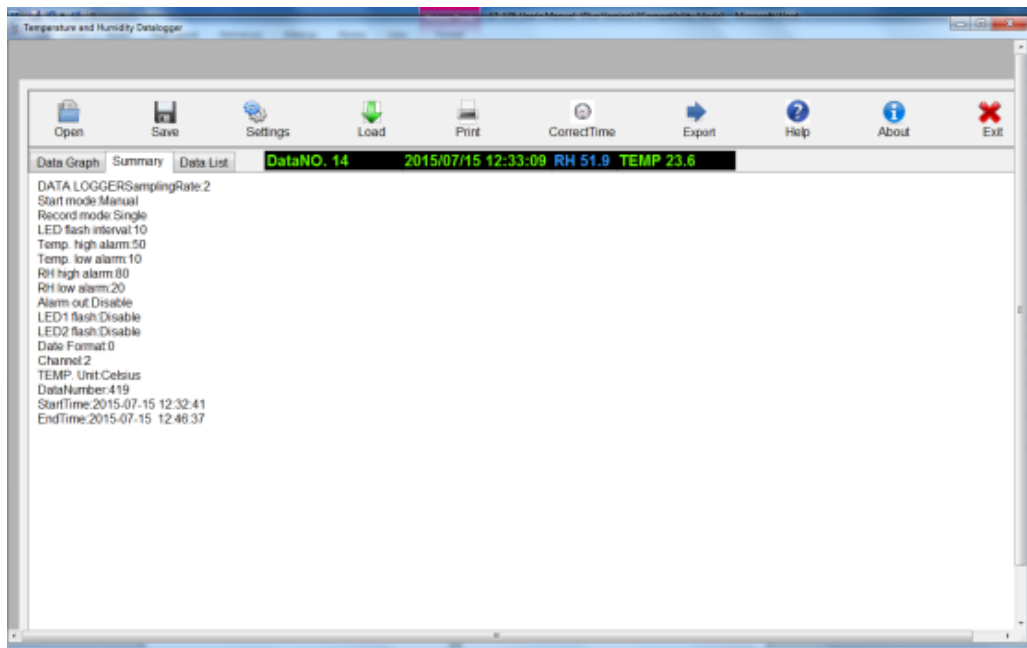


(2). Click “” button to open and view saved files

## 6.2.7 View saved files

After opening the desired saved files, click **Summary** or **Data List** to view the information and results on the meter at that time.

### Summary:



### Data List:

ID	DateTime	RH	T1
0	2015-07-15 12:32:41	52.1	23.6
1	2015-07-15 12:32:43	52.1	23.6
2	2015-07-15 12:32:45	52.4	23.6
3	2015-07-15 12:32:47	52.7	23.6
4	2015-07-15 12:32:49	52.9	23.6
5	2015-07-15 12:32:51	52.8	23.6
6	2015-07-15 12:32:53	52.6	23.6
7	2015-07-15 12:32:55	52.4	23.6
8	2015-07-15 12:32:57	52.3	23.6
9	2015-07-15 12:32:59	52.2	23.6
10	2015-07-15 12:33:01	52.1	23.6
11	2015-07-15 12:33:03	52.0	23.6
12	2015-07-15 12:33:05	52.0	23.6
13	2015-07-15 12:33:07	51.9	23.6
14	2015-07-15 12:33:09	51.9	23.6
15	2015-07-15 12:33:11	51.8	23.6
16	2015-07-15 12:33:13	51.8	23.6
17	2015-07-15 12:33:15	51.8	23.6
18	2015-07-15 12:33:17	51.8	23.6
19	2015-07-15 12:33:19	51.8	23.6
20	2015-07-15 12:33:21	51.7	23.6
21	2015-07-15 12:33:23	51.7	23.6
22	2015-07-15 12:33:25	51.7	23.6
23	2015-07-15 12:33:27	51.7	23.7
24	2015-07-15 12:33:29	51.7	23.7
25	2015-07-15 12:33:31	51.6	23.7
26	2015-07-15 12:33:33	51.6	23.7

### **6.3 How to Work a Combination Lock**

- (1) Open the combination lock with the previous combination that the lock was set to. If you just bought the lock then the most likely combination will be all zeros.
- (2) Pull up on the lock latch to expose the opening.
- (3) Insert the combination-changing tool fully into the hole on the bottom of the lock.
- (4) Change the combination of the lock to one of your choice while the combination-changing tool is inserted into the lock, and then remove the tool.

## **7. Notes**

- ② Repairs or servicing is not covered in this manual and should only be performed by qualified personnel.
- ③ Wipe the unit with a dry soft cloth. Do not use abrasives or solvents on this instrument.
- ④ Remove the battery when the meter is to be stored for long periods of time to avoid battery leakage.

## 8. Accessories

- ① User's manual
- ② USB Cable
- ③ Software
- ④ Combination Lock and meter holder

